



# hd C2

## Commercial Stick

The **hd C2** is a passive 1-way miniature speaker, equipped with two 2" broadband drivers with a linear frequency response. The operation can be done via any power amplifier without DSP and makes the hd C2 the optimal solution for decentralized or small sound applications such as restaurants, conference rooms or theaters. The hd C2 can be flexibly and easily installed permanently or can be used mobile. Using the discreet ball joint wall mount, the hd C2 can be simply tilted and tilted or attached to the surface to be fixed extremely close and unobtrusive with the L-angle wall mount. Internal clamping connections ensure a tool-free and quick connection of the loudspeakers. For optimum adaptation to the room architecture, the loudspeaker can be customized in all RAL colors and special lengths. If wall mounting is not possible, the speakers can be used with the optional 3/8" threaded base plate and SpeakCON jack on a microphone stand.



### Features

- Operation on any amplifier
- frequency and phase optimization integrated
- elegant design
- precise, even sound emission
- coverage 100 ° x 50 °
- excellent speech intelligibility
- 100V version available

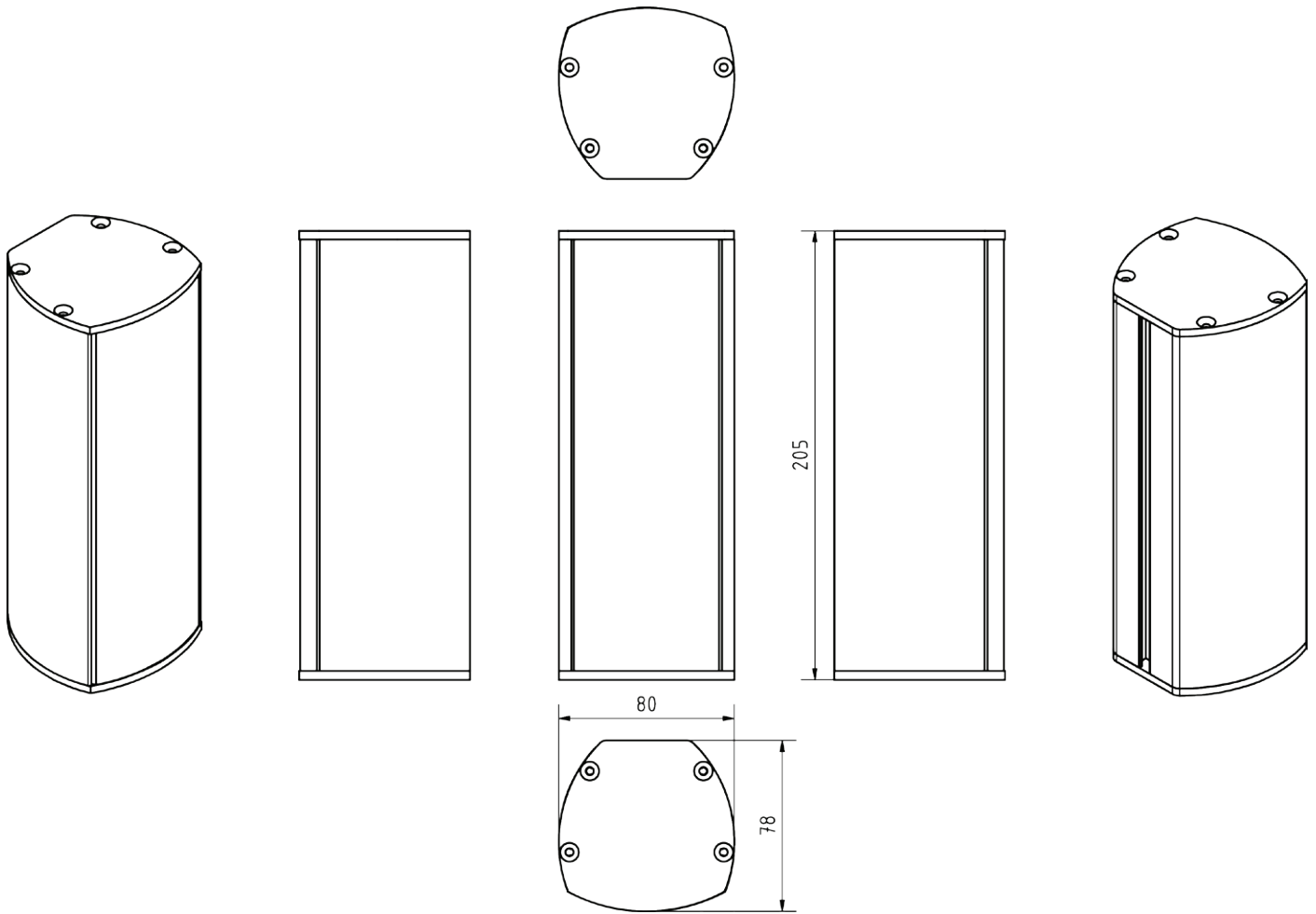
### Applications

Restaurants, bars, airports, train stations, home theater, conference rooms, hotels, A/V installations, multimedia applications, meeting rooms, TV studios, churches

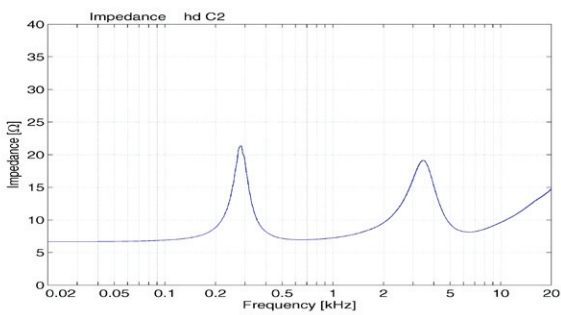
<b>Model</b>	<b>hd C2</b>
<b>Order number</b>	40300
<b>Acoustic design</b>	PointSource
<b>Transducers</b>	2x 2" fullrange
<b>Impedance</b>	8 Ω
<b>Coverage (hor x ver)</b>	100° x 50°
<b>Frequency range (-6dB)</b>	150 Hz - 22 kHz
<b>Sensitivity (1W / 1m)</b>	89 dB
<b>Power Rating AES / Peak</b>	50 / 70 W
<b>SPLmax @ 10% THD</b>	113 dB
<b>Enclosure</b>	powder-coated aluminum profile black, steel grille with acoustic foam, clamp terminal inside, cable inlet rear, incl. 2x M6 nuts
<b>Optional Accessories</b>	Speakon NL4 (Art. 900109) 3/8"-thread + NL4 (Art. 900107) 35 mm flange + NL4 (Art. 900857) RAL color (Art. 1070), wall bracket, Special length, weather protection,100V
<b>Weight</b>	2 kg
<b>Dimensions (W x H x D)</b>	80 x 205 x 78 mm

# hd C2 datasheet

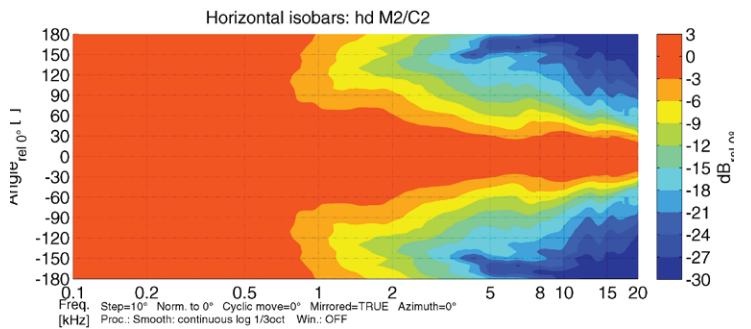
## Dimensions [mm]



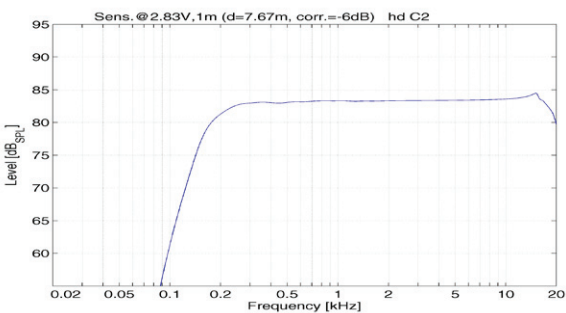
## Impedance



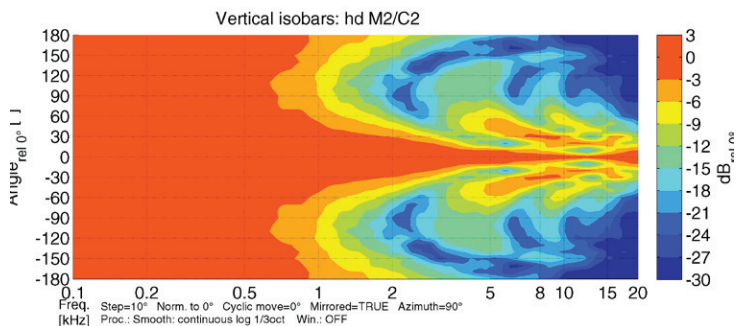
## Horizontal Isobars



## Frequency response with DSP preset



## Vertical Isobars



# hd C2 datasheet

## Accessories



### Special length

Special length of the speaker according to customer requirements

Order number: 40710 (up to 1000 mm total length)  
40711 (up to 2000 mm total length)



### RAL color

Special color per article according to RAL color chart

Order number: 1070



### Weather resistant

Impregnation against weather influences

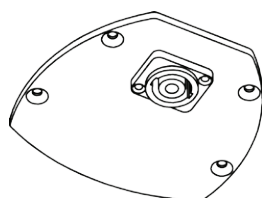
Order number: 4610



### 100V-Transformer

integrated 100V transformer with three power taps (30/15/7,5 W)

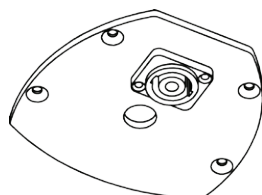
Order number: 1074



### Plate with NL4

closed bottom plate with SpeakCON NL4 connector

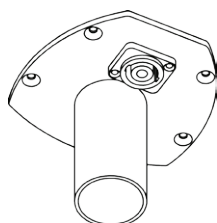
Order number: 900109



### Plate with 3/8"- inlet thread with NL4

Bottom plate with 3/8"- inlet thread for mounting the speaker on a microphone stand with SpeakCON NL4 connector

Order number: 900107



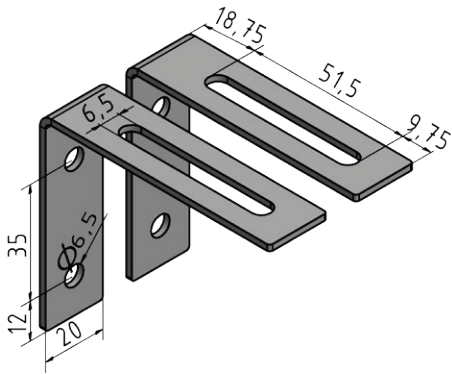
### Plate with 35 mm flange and NL4

Bottom plate with 35 mm flange with thumbscrew for mounting on a distance rod and with SpeakCON NL4 connector

Order number: 900857

# hd C2 datasheet

## Accessories



### L-bracket wall mount-set

Discreet L-bracket set for extremely close mounting of the speaker to the wall. Side swivel with inclination up to 5°. The speakers housing plates are equipped with M6 inlet threads.

Incl. 2x M6x14 hexagon socket screws

Load capacity:	5 kg
Dimensions (W x H x D):	20 x 60 x 80 mm
Order number:	900106 (in RAL color of speaker)



### Ball joint wall mount

Compact ball joint wall mount bracket for tilting up to 20° and pivoting of up to 180°.

Load capacity:	5 kg
Dimensions (W x H x D):	40 x 70 x 70 mm
Order number:	901101BLK (black RAL 9005) 901101W (white RAL 9010)