



# hd MP15N

## Multi Purpose Loudspeaker

The **hd MP15N** is a multifunctional, passive 2-way system with innovative acoustic design and is equipped with proven high-performance components of the hd HLS-series consisting of a powerful 12" neodymium woofer in a vented design and a 1.4" exit neodymium compression driver. The outstanding large and rotatable horn allows a very low crossover frequency and ensures a high directivity ensuring a controlled radiation behavior. Two horn variants allow different horizontal and vertical dispersion angles of either 90° x 60° or 60° x 40° as FOH or monitor loudspeakers at concerts or in fixed installations as clusters in sports venues or theaters. The acoustic and mechanical design provides a coherent and interference-free reproduction of all music genres and sounds when connected to any power amplifier without additional DSP preset, even without a hd system amplifier. For applications with additional subwoofers the hd Sub- / P-series extends the frequency range of the speaker and integrates the hd MP15N seamlessly into the harmonic design system concept of a holistic system.



### Features

- high performance 12" neodymium woofer
- extreme power rating of 600W AES / 2400W PEAK
- two monitor angles 32° and 45°
- different Coverage angles 90° x 60° / 60° x 40°
- Integrated frequency and phase optimization
- compact dimensions
- operation with any amplifier

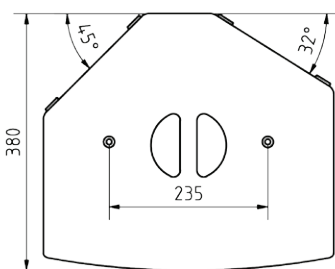
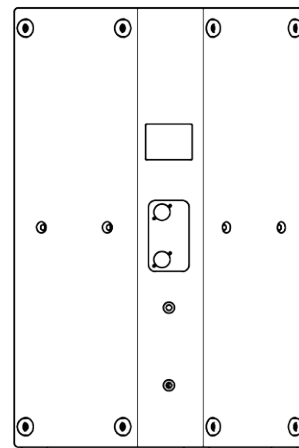
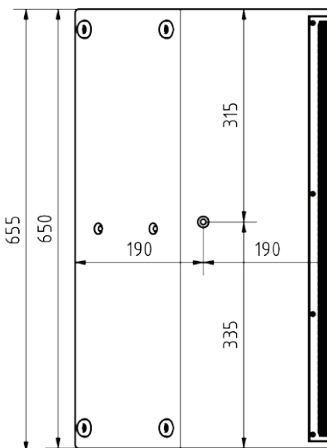
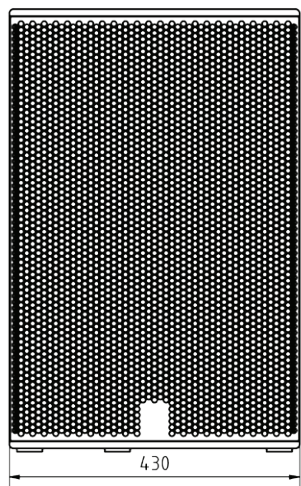
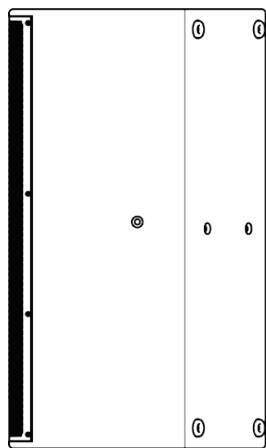
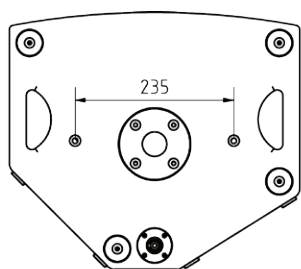
### Anwendung

FOH or monitor system, mobile or fixed, live events, clubs, sports venues, theaters, city halls, theme parks

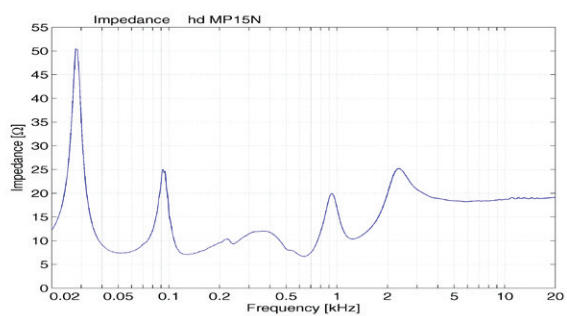
Model	hd MP15N
<b>Order number</b>	60076 - 90° x 60° Horn 60077 - 60° x 40° Horn
<b>Acoustic design</b>	bass reflex, time aligned
<b>Transducers</b>	1x 15"N-woofer 1x 1.4"N-compression driver
<b>Impedance</b>	8 Ω
<b>Crossover</b>	900 Hz
<b>Coverage (hor x ver)</b>	90° x 60° or 60° x 40°, rotatable
<b>Frequency range (-6dB)</b>	50 Hz - 20 kHz
<b>Sensitivity (1W / 1m)</b>	101 dB
<b>Power Rating AES / Peak</b>	600 / 2400 W
<b>SPLmax @ 10% THD</b>	134 dB
<b>Enclosure</b>	robust multiplex housing with polyurethane coating black, recessed connection panel with 2x NL4, 1x NL4 and 2x grip recesses on underside, 35 mm flange, carrying handle on top, steel grille with acoustic foam
<b>Optional Accessories</b>	transport cover (art. 30117), U-Bracket (art. 908519), RAL color, Wall holder (art. 900852), weather protection
<b>Weight</b>	23 kg
<b>Dimensions (W x H x D)</b>	430 x 650 x 380 mm

# hd MP15N datasheet

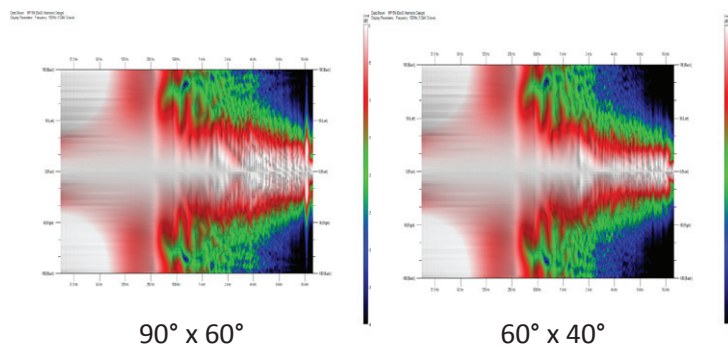
## Dimensions [mm]



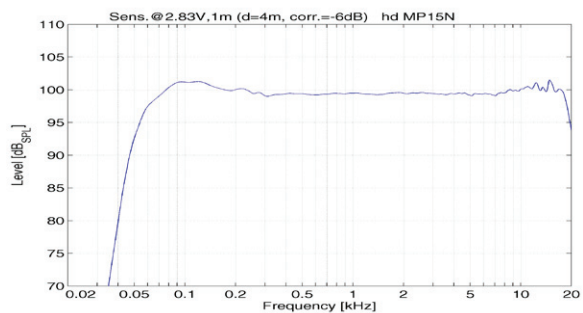
## Impedance



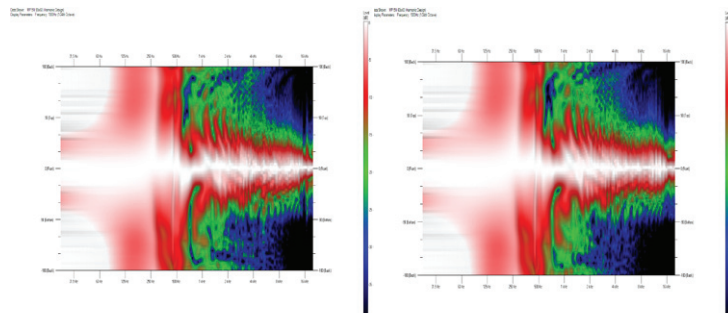
## Horizontal Isobars



## Frequency response with DSP preset



## Vertical Isobars



# hd MP15N datasheet

## Accessories



### Transport cover MP15N

Durable polyester protective cover with 10 mm padding and hd logo imprint

Order number: 30116



### RAL color

Special color per article according to RAL color chart

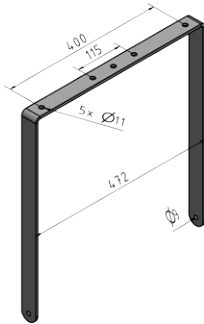
Order number: 1070



### Weather resistant

Impregnation against weather influences

Order number: 4610

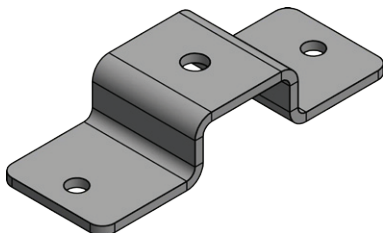


### U-Bracket MP15N

U-bracket for flying on a truss or tilting on a tripod. Five mounting holes on the top for mounting half-couplers or tripod adapters

incl. 2x M8 star grip screw

Order number: 908519 (black RAL 9005)



### Omega mounting adapter half clamp MP15N

For mounting a half clamp

Order number: 900868 (black RAL 9005)



### Mounting adapter wall bracket MP15N

For use with wall bracket 24481

Order number: 900866BLK (black RAL 9005)  
900866W (white RAL 9010)



### Wall mount bracket 24481

Wall distance 110 mm, laterally swiveling with inclination up to 30 °

Load capacity: 25 kg  
Dimensions (W x H x D): 120 x 220 x 110 mm  
Order number: 900852BLK (black RAL 9005)  
900852W (white RAL 9010)