



hd 6CXN

Coaxial Speaker

The hd 6CXN is a passive 2-way system equipped with a bass-reflex 6" neodymium woofer / midrange speaker and a 1" neodymium high-frequency driver. Operation is possible via any power amplifier - even without DSP - and makes the hd 6CXN the optimal solution for high-quality mobile or permanently installed public address



applications in, for example, industrial events, theaters or sports facilities. The housing is made of multiplex wood and provided with a shock and weather-resistant polyurethane coating, and a ballproof, elegant and rounded steel grille in black. For permanent installation, two M6 and M8 inlet threads are available for the cost-effective installation of standardized wall mounts or brackets. The conical horn provides a natural sound without the horn-typical sound coloration, a long range and optimal speech intelligibility. The frequency- and phase-optimized crossover guarantees a linear transmission behavior. An integrated 35 mm flange allows use on a tripod or with two monitor angles with 35° and 45° as a stage monitor.

Features

- Operation on any amplifier
- frequency and phase optimization integrated
- elegant and slim design
- clear mids and brilliant highs
- coverage 90° x 90°
- two monitor angles 35° and 45°
- excellent speech intelligibility
- compact dimensions
- RAL color optional

Applications

Industrial events, theaters, city halls, restaurants, bars, AV installations, TV studios, sports facilities, amusement parks, compact PA

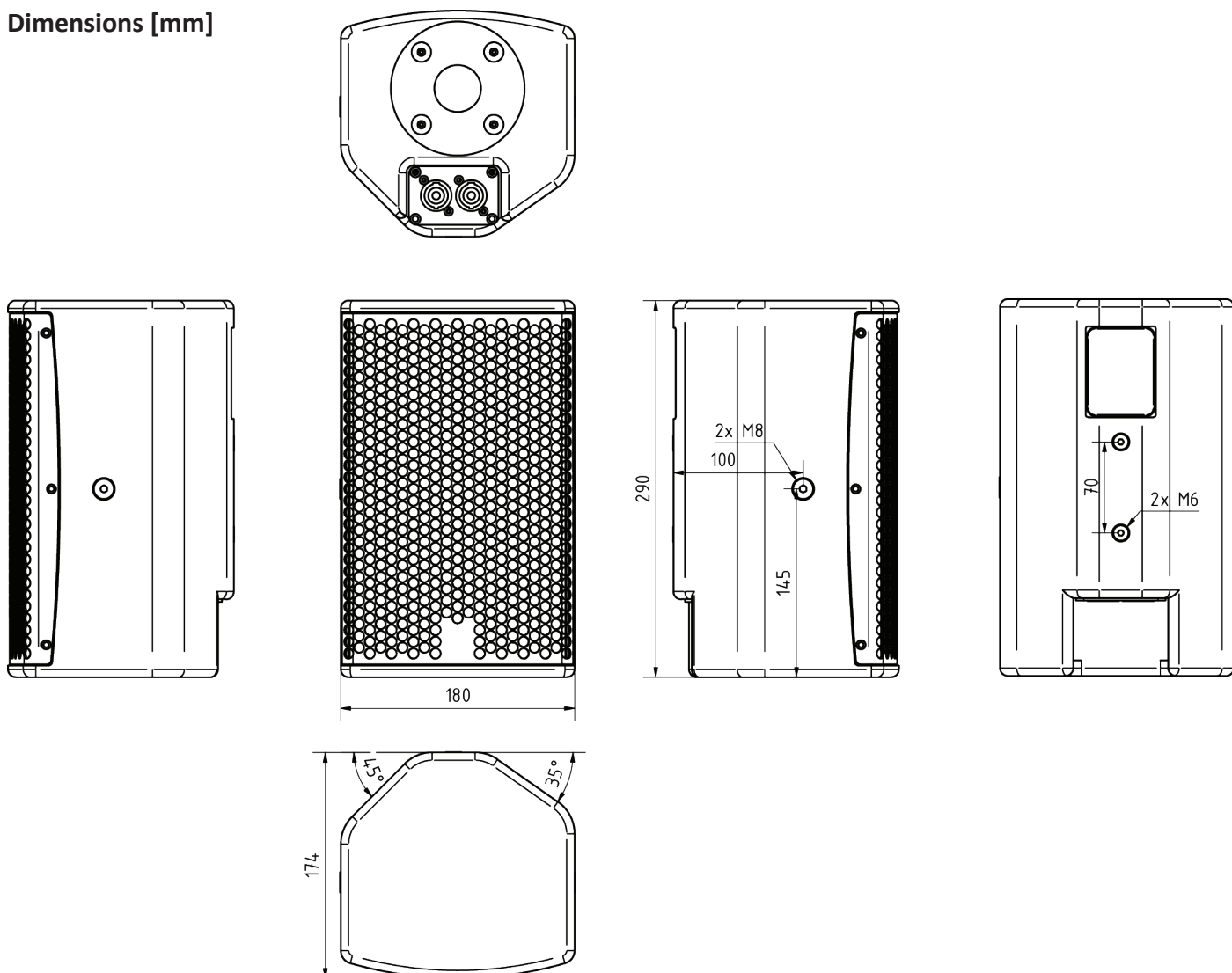
Model	hd 6CXN
Order number	60045
Acoustic design	Coax, Bassreflex
Transducers	1x 6" N LF 1x 1" N HF
Impedance	8 Ω
Crossover	1400 Hz
Coverage (hor x ver)	90° x 90°
Frequency range (-6dB)	80 Hz - 20 kHz
Sensitivity (1W / 1m)	94 dB
Power Rating AES / Peak	150 / 600 W
SPLmax @ 10% THD	119 dB
Enclosure	robust multiplex housing with polyurethane coating black, recessed connection panel with 2x NL4, M6 & M8 inlet thread, steel grille with acoustic foam inside, 35 mm flange, 35°/45° baffle angle
Optional Accessories	wall bracket (Art. 900851), U-bracket, T-mounting adapter (Art. 900869) RAL color (Art. 1070) Weather resistant (Art. 4610)
Weight	4.5 kg
Dimensions (W x H x D)	180 x 290 x 174 mm



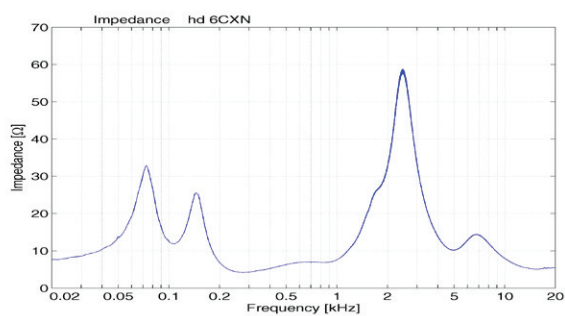
...simply harmonic sound

hd 6CXN datasheet

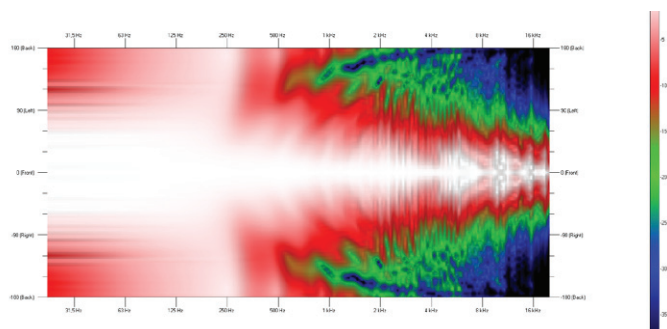
Dimensions [mm]



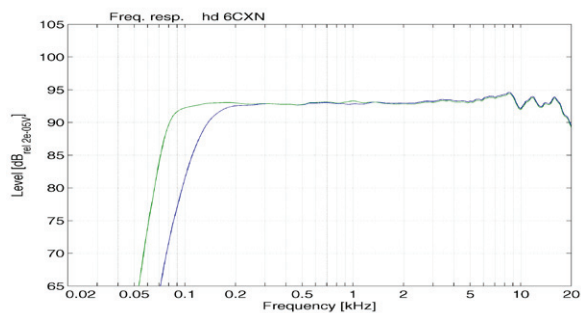
Impedance



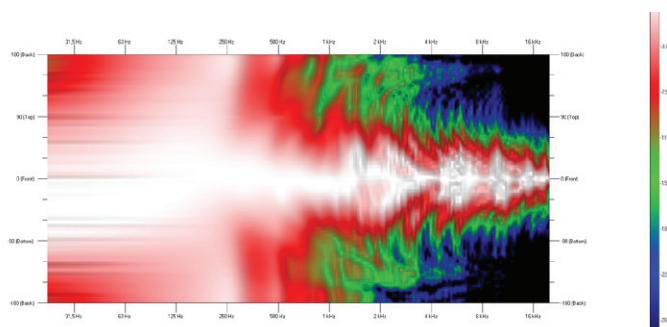
Horizontal Isobars



Frequency response with DSP preset



Vertical Isobars



hd 6CXN datasheet

Accessories



RAL color

Special color per article according to RAL color chart

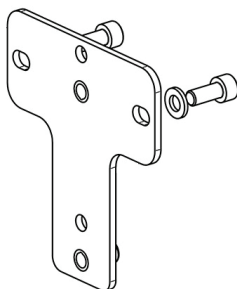
Order number: 1070



Weather resistant

Impregnation against weather influences

Order number: 4610



T-mounting adapter 6CXN

For use with wall bracket 24471 when mounted horizontally

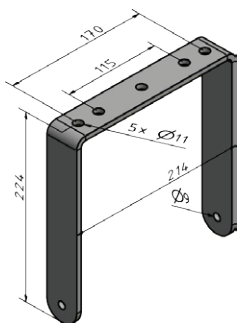
Order number: 900869BLK (black RAL 9005)
900869W (white RAL 9010)



Wall mount bracket 24471

Wall distance 110 mm, laterally swiveling with inclination up to 30 °

Load capacity: 15 kg
Dimensions (W x H x D): 90 x 160 x 110 mm
Order number: 900851BLK (black RAL 9005)
900851W (white RAL 9010)



U-bracket 6CXN

U-bracket for flying on a truss or tilting on a tripod. Five mounting holes on the top for mounting half-couplers or tripod adapters

incl. 2x M8 knurled screw

Order number: 908504 (black RAL 9005)